

Installation Instructions:

Ensure within aperture is clean and free of debris, loose cement, and remove all dust from surfaces requiring installation.

Detail A - 20mm wide x 25mm depth annular to combustible pipes within concrete floors up to 240 minutes integrity & insulation.

1. Fill void with 33kg/m3 rock mineral fibre to form a 25mm recess top and bottom of floor.
2. Fill recess top and bottom until flush with face and trowel smooth.

Pipe Type	Diameter mm	Thickness mm	Rating
PE	40	3.7	EI 120
	110	3.9	E 240 I 180
	125	74	
	125	114	E 120 I 60
PVC	40	1.9	EI 120
	110	3.2	
PP	40	1.9	EI 120
	110	2.7	EI 60
	110	3.4	EI 120 I 60
	110	10	EI 120

Detail B - 20mm wide x 25mm depth annular to insulated non-combustible pipes within to concrete / masonry floors.

1. Fill void with 100mm depth of 33kg/m3 rock mineral fibre to form a 25mm recess top of floor.
2. Fill recess until flush with face and trowel smooth.

Penetration Type	Dia mm	Thickness mm	Insulation	Rating
Cooper / Steel	15	0.7 to 14	30mm Glass Fibre	E 180 I 120
	160	2 to 14		E 120 I 60
Copper / Steel	15	0.7 to 14	33mm Nitrile	EI 180
Copper / Steel	15	0.7 to 14	13mm Nitrile	E 240 I 180
	159	2 to 14		E 240 I 15

Detail C, D & E - 50x50mm up to 600 x 600 aperture within concrete floor up to 120 minutes integrity & insulation suitable for cables and combustible.

1. Install as details B

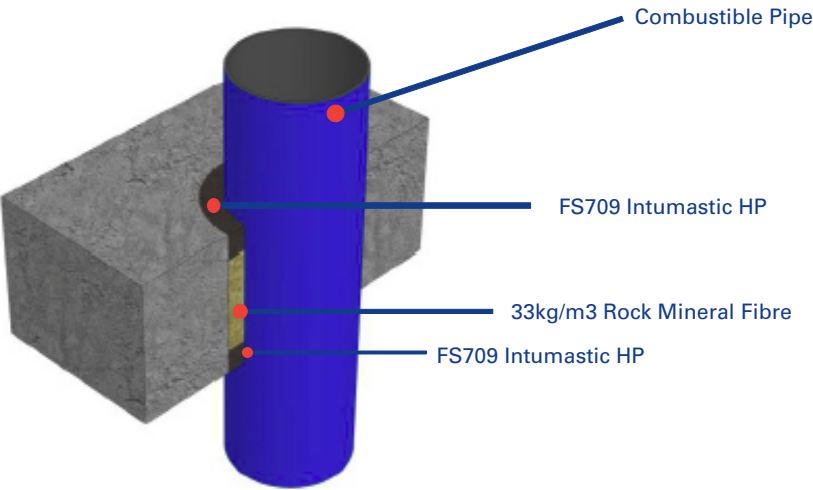
Penetration Type	Type	Dia mm	Rating
Cable Bundle	33 Type F	85mm	E 90 I 45
Cable	Type B		EI 120
	Type G2		
	Type F		
Cable Bundle	Type A1, A2 & A3		
Penetration Type	Type	Size mm	Rating
Cable Ladders / Tray		Up to 500	Up to EI 120
Full EN Cable Set	Various		Up to EI 120 I 90

Detail F - 20mm wide x 50mm annular within FB750 Intubatt, within concrete/masonry floor up to 60 minutes integrity & insulation

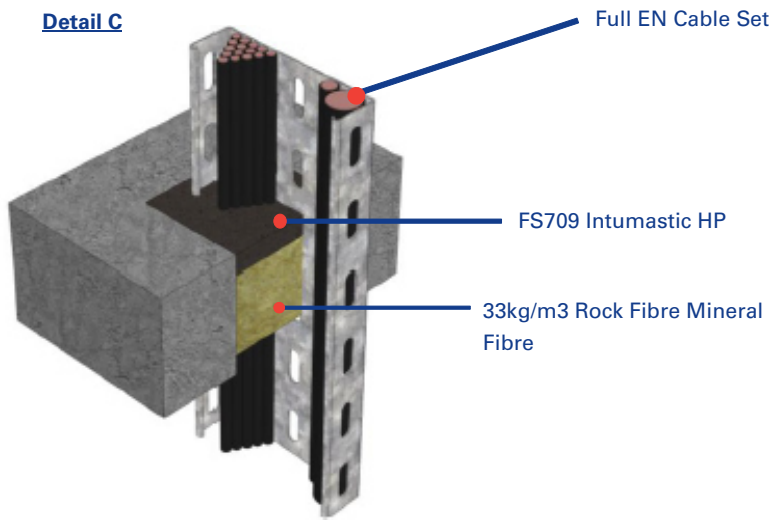
1. Install FB750 Intubatt as details PS 003, Detail C, D & F
2. Ensure minimum of 20mm annular is cut around the penetration
3. Fill annular with FS709 Intumastic HP

Pipe Type	Diameter mm	Thickness mm	Rating
PE	40	3.7	EI 60
	90	8.2	
	110	3.4 to 6.6	
PVC	40	1.9	EI 60
	90	6	
	125	4.8 to 74	
PP	40	1.9	EI 160
	90	8.2	
	110	2.7 to 10	
ABS	40	2.7	EI 60
	90	10	
	110	7.3 to 11.2	

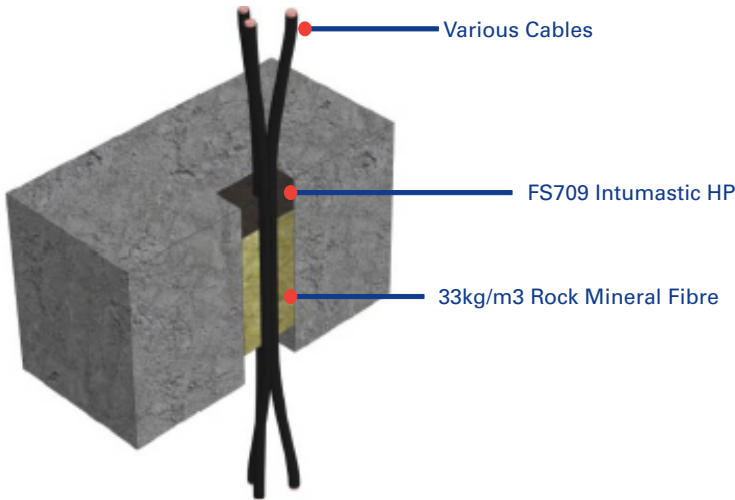
Detail A



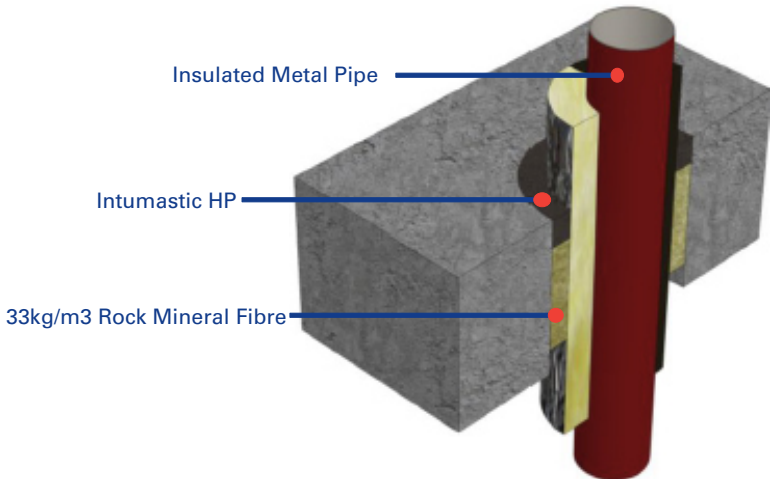
Detail C



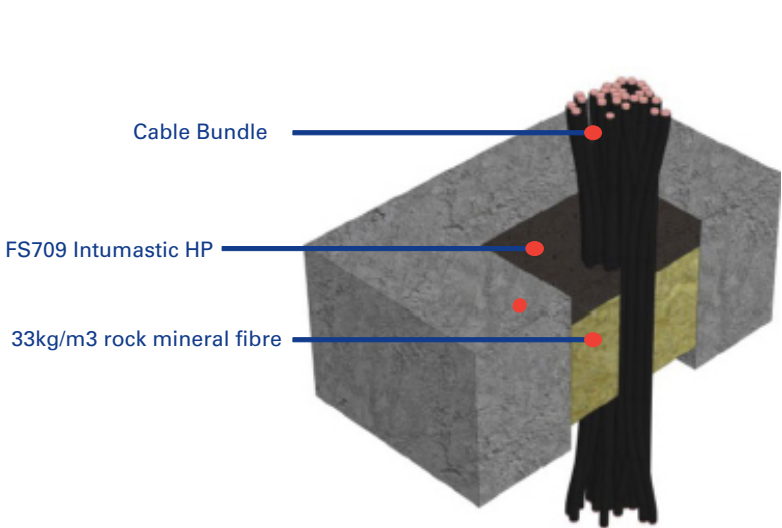
Detail E



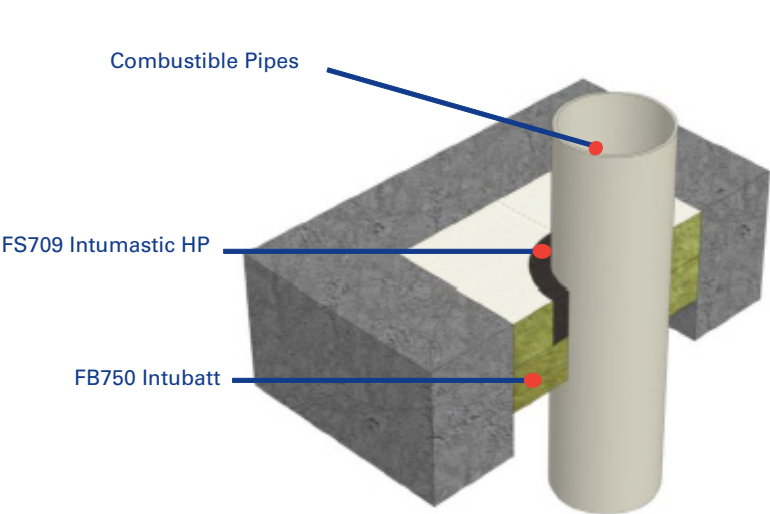
Detail B



Detail D



Detail F



Test Information:

Test: Bsen 136-1:1999, BSEN 1366-3: 2009, BSEN 1366-4:2006 +A1:2010

Test Reference WF375662, WF375663

Products:

FS709 Intumastic HP , FB760 Intubatt and FS702 Intumastic

Scenario:

Annular Penetration Seals

Penetrations:

Various

Construction:

Concrete Floor

Nullifire details will only perform to the substrates performance capabilities. This applies to fire and acoustic. It is the responsibility of the purchaser to ensure suitability. If in doubt call technical.

Drawing Title:

FS709 Intumastic HP to various penetrations within floor

Drawing Reference No:

PS-008b

A3